



KR 10 R1100 five



Technical data

Maximum reach	1101 mm
Maximum payload	10 kg
Pose repeatability (ISO 9283)	± 0.03 mm
Number of axes	5
Mounting position	Floor
Footprint	320 mm x 320 mm
Weight	approx. 53 kg

Axis data

Motion range	
A1	±170 °
A2	-186 ° / 45 °
A3	5 ° / 156 °
A4	-
A5	-111 ° / 120 °
A6	±350 °

Operating conditions

Ambient temperature during operation: 5 °C to 45 °C (278 K to 318 K)

Protection rating

Protection rating	IP54
Protection rating, in-line wrist	IP54

Controller

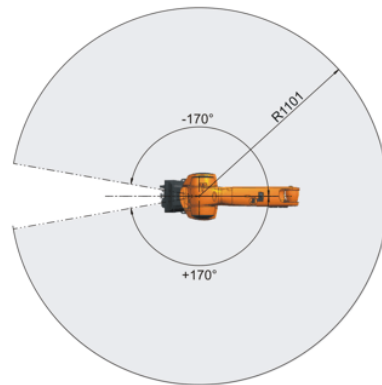
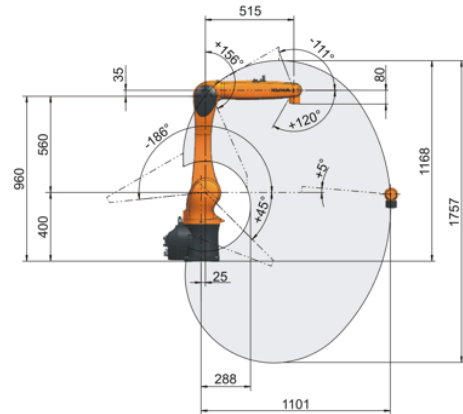
Controller	KR C4 smallsize-2; KR C4 compact
------------	-------------------------------------

Teach pendant

Teach pendant	KUKA smartPAD
---------------	---------------

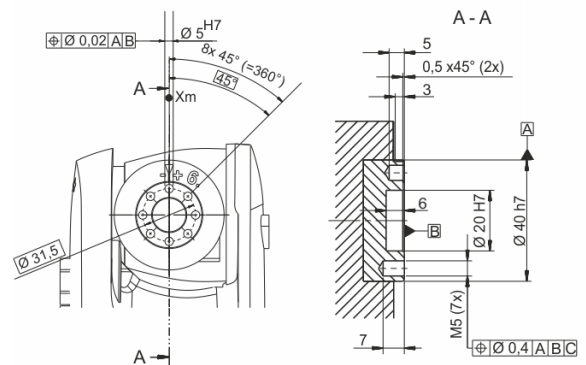
Workspace graphic

dimensions: mm



Mounting flange

Maße / Dimensions: mm



Cycle time

147 cycles per minute (25 mm / 305 mm / 25 mm, 1 kg)

